

LAKESTONE

LIFE'S BETTER UP HERE

The Summit
AT LAKESTONE

Now Selling

Now Selling

The Summit

AT LAKESTONE

Introducing an elevated collection of lakeview homesites, unparalleled in natural beauty. For those who seek what dreams are made of, the journey begins on a road less travelled. The destination, Lake Country. Its rarest treasure, The Summit at Lakestone.



Map is an artistic illustration and is intended as a general reference only. The Developer reserves the right to make changes without notice. Views are approximate only and not representative of individual homesites/lots. This is not an offering for sale of any of these homesites/lots. Such offering may only be made after filing a disclosure statement. To receive a copy of the disclosure statement when available, please contact Macdonald Communities Lakestone at info@lakestoneliving.com. E.&O.E.

OUR VISION

From the beginning, Lakestone has been setting the standard for Okanagan living. No other masterplan combines natural beauty, sweeping views, and exclusive ownership access to the amenities that connect our community from top to bottom. Designed for healthy, active lifestyles, Lakestone boasts over 28 km of trails, 250 acres of protected natural space, and all the recreational benefits that come with vibrant lakeside living.

You were meant to live here.

THE LAKE CLUB

Ownership at Lakestone gives you exclusive access to the private Lake Club and its exceptional range of amenities. This spectacular facility boasts panoramic views of Okanagan Lake while catering to pleasure-seekers with a wide range of interests.

From activities dedicated to your wellness and fitness to a rooftop terrace for sunsets and cocktails, your private club is the perfect setting for creating timeless, lakefront memories.



- Fully equipped fitness centre
- Swimming pool and two luxurious hot tubs
- Kayak and paddleboard storage steps from the beach
- Outdoor kitchen, barbecue, and entertainment area on the lavish pool deck
- Covered rooftop terrace with cozy fireplace and soft seating
- His and hers change rooms with indoor and outdoor showers
- Multi-level facility with easy elevator access
- Direct access to Waterside Park and the swimming dock

THE CENTRE CLUB



Welcome to the heart of our Lakestone community. Exclusively for the enjoyment of residents, this architecturally inspired gathering place is made for connecting with neighbours and discovering new friendships.

Designed for active living, the Centre Club features a large, state-of-the-art fitness centre and dedicated studio for yoga and Pilates. Emerging from the stone, glass and timber, you'll find an expansive outdoor terrace with swimming pool, a relaxing hot tub open year-round, casual loungers and a community barbecue area for entertaining.

- Fully equipped fitness centre and yoga studio
- Large pool and hot tub open year-round
- Private change rooms and day lockers
- Outdoor barbecue and entertainment area on the pool deck
- Multi-purpose community room that can be booked for celebrations and meetings
- Adjacent to Benchlands Park, tennis, pickleball and multi-sport courts



BENCHLANDS PARK

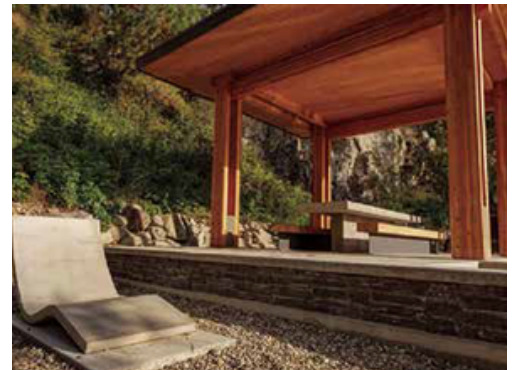


Benchlands Park is a vibrant community space in the heart of the neighbourhood, close to the Centre Club. With pickleball, tennis, and basketball courts, along with natural seating, play areas, and easy access to scenic trails, it's a place for both residents and the public to gather, play, and connect with nature.

WATERSIDE PARK



Steps from the Lake Club, a trail leads to Lakestone's private beach with a timber pavilion, picnic tables, loungers, and a spacious public swim dock. With calm waters for swimming, paddling, or sailing, and a private community boat dock nearby for watercraft access, it's a place to relax by the shore or head out on the lake.



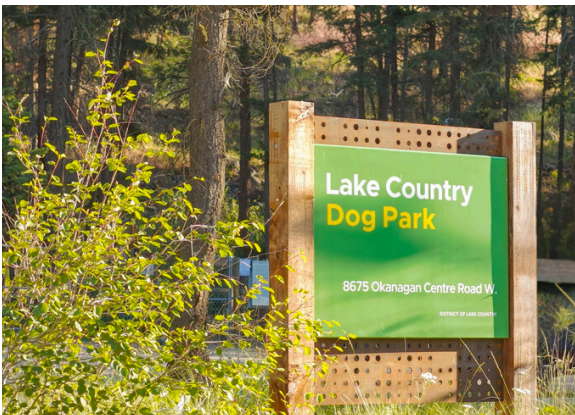
TRAIL SYSTEMS

Lakestone's 28 kilometre trail network climbs from the lake shore to Beacon Park, covering a 300-metre elevation change with sweeping views of Okanagan Lake, Ellison Lake, Wood Lake, and Kalamalka Lake. Small parks along the way provide natural rest spots, while trailhead markers at key entry points make it easy to explore different routes throughout the community.



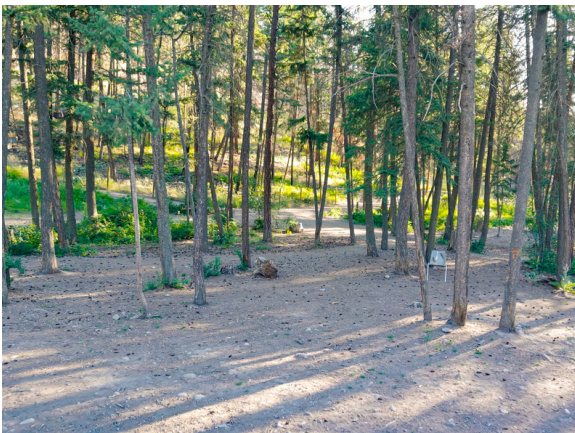
LAKE COUNTRY BIKE PARK

The Lake Country Bike Park is a community space designed for riders of all ages and abilities. With a variety of jumps, berms, and trails, it's a place for families, beginners, and experienced cyclists to ride, practice, and connect. Just minutes from Lakestone, the park has become a popular hub for outdoor activity and recreation.



LAKE COUNTRY DOG PARK

The Lake Country Dog Park offers open space for dogs to run, play, and socialize in a safe, fenced environment. With trails, seating areas, and plenty of room to roam, it's a welcoming spot for both pets and their owners. Just a short drive from Lakestone, the park is a favourite gathering place for the community's four-legged friends.



LAKESTONE

LIFE'S BETTER UP HERE

FREQUENTLY ASKED QUESTIONS

What amenities does Lakestone have, and what is the cost to use the amenities?

The Lake Club, The Centre Club and our Community Docks are the three amenities which make up our members-only amenity package. The current amenity fee paid by all Lakestone homeowners is \$76.32 per month. Our disclosure statement caps the amenity fee from ever surpassing \$135. To see what each of our Clubs offers, please visit our website www.lakestoneliving.com.

What other “free” recreational activities are on-site?

There are numerous [free options to enjoy](#) at Lakestone, including Benchlands Park offering a tennis court, three pickleball courts, a basketball court, built-in ball hockey nets, a kids’ playground, benches, picnic tables and a public washroom. Public lake access is along the foreshore near the Lake Club at Waterside Park, offering a timber pavilion, an oversized picnic table, several smaller picnic tables, some hard seating, a calm bay for swimming, a pebbly beach, cliff jumps, access to a washroom and the newly constructed public swim dock. In addition, Lakestone offers over 28 km of various trails for walking, hiking and biking.

How far away are you from the Airport and the University?

Lakestone is 10 minutes to the Kelowna International Airport (YLW) and 12 minutes to the University of British Columbia Okanagan (UBCO).

Are there schools nearby?

Lakestone is within School District #23, with bus service that transports students from various neighbourhoods to the following schools in our catchment:

- Peter Greer Elementary School (French Immersion)
- Davidson Elementary School
- HS Grenda Junior Middle School
- George Elliott Secondary School

LAKESTONE

LIFE'S BETTER UP HERE

FREQUENTLY ASKED QUESTIONS

Are there any quick possession homes available?

The Destination Show Home located at 9854 Beacon Hill Drive is the only remaining quick possession home available.

Do you have lots or homes for sale right now, and are there more lots coming?

Yes — we've just released our most elevated offering to date: 57 estate-sized homesites at The Summit at Lakestone, available now. There will be more homesites in the future, but no additional releases are planned for several years. This is a rare opportunity to build in one of Lake Country's most sought-after communities.

How much will The Summit homesites be?

The homesites located in The Summit at Lakestone start from just \$369,900 and range up to \$1.25M, depending on view and type of homesite.

Are there going to be condominiums at Lakestone?

Dominium Group is completing an 86-unit condominium community in the Benchlands neighbourhood of Lakestone called Zara at Lakestone. While Macdonald Development Corporation is not directly involved in the construction of the project, we will keep our registrants informed of any potential future condominium communities at Lakestone.

Do you have any show homes we can visit?

Yes, we have our Destination Show Home Open Wednesday to Saturday from noon to 4 PM, located at 9854 Beacon Hill Drive.

Can I use my own builder, or do I have to use one of the Preferred Builders?

In addition to our Preferred Builders, you are welcome to speak with our Development Team about other "Accredited" builders. All builders who undertake a home build at Lakestone must follow an architectural guideline and building scheme. This ensures all homes at Lakestone meet our high standards for excellence, form, character and integrity.

LAKESTONE

LIFE'S BETTER UP HERE

Connect with Lakestone's Preferred Builders

Lakestone's Preferred Builders are locally owned Okanagan companies, hand-selected by Macdonald Communities for their expertise, craftsmanship, and client-focused approach. Whether it's design ideas, homesite consultations, building options, or accurate cost estimates, our Preferred Builders are here to guide you through the process of bringing your home vision to life.

RICHMOND CUSTOM HOMES

250-801-2449

info@richmondcustomhomes.ca

richmondcustomhomesltd.com

EVERTON RIDGE HOMES

250-241-9444

sales@evertonridge.ca

evertonridge.ca

LINK CUSTOM HOMES

250-575-0830

calvin@linkcustomhomes.ca

linkcustomhomes.ca

KEITH CONSTRUCTION

250-545-1300

info@keithconstruction.ca

keithconstruction.ca

DESTINATION CUSTOM HOMES

250.863.1979

charlotte@homesbydestination.com

homesbydestination.com

SJT CONTRACTING

250-863-0857

admin@sjtcontracting.com

sjtcontracting.com



Thank you for considering Lakestone

If you would like any additional information about Lakestone or our available homesites, please **call 250-766-1213**, **email info@lakestoneliving.com** or **visit the Information Centre at 9876 Benchland Drive**. Open Tuesday by appointment, and Wednesday to Saturday, 12 noon to 4:00 pm.

